



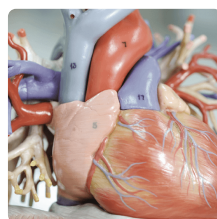
Kibblesworth Academy

Class plan - Year 6 Our Curriculum



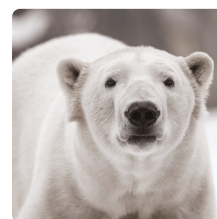
Britain at War

History



Blood Heart

Science



Frozen Kingdom

Geography



Maafa

History



Hola Mexico!

Music



Darwin's Delights

Science

Suggested text

Goodnight Mister Tom – Michelle Magorian

Pig Heart Boy – Malorie Blackman

The Call of the Wild – Jack London

Freedom – Catherine Johnson

Holes – Louis Sachar

Sky Hawk – Gill Lewis

Memorable experience

War museum

Pig heart dissection

Investigate ice

Exploring Africa today

Mexican musical performance

Animal specimen observation

Innovate challenge

Memorial books

Heart charity fundraiser

Polar rescue mission

Inspirational black Britons

Festival procession

Morphing animation

| | | | | | | |
|----------------|---|---|---|---|---|---|
| English | Persuasive posters; Historical narratives; Nonets | Non-chronological reports; Shape poetry; Slogans and adverts; Biographies; Narratives using personification | Chronological reports; Short narratives; Diaries; Haiku poetry; Letters | Newspaper reports; Persuasive letters; Non-chronological reports; Acrostic poems | Invitations; Postcards; Instructions; Myths and legends; Poetry | Labelling and journals; Diaries; Letters; Explanations; Newspaper reports |
| Geography | Place and interconnections; Maps | | Features of the polar regions | Africa – countries, land use, natural resources, location, settlements, population, climate and physical features | Maps; Human and physical geography of Mexico | Maps; Geographical similarities and differences; Islands of the world |
| Computing | | Websites; Flow diagrams | Collecting, evaluating and presenting data | | Online research; Presentations | Online research; Morphing animations; Computer networks |
| Art and design | | Modelling and sculpture; Abstract art | Photography; Painting; Block printing | | Sculpture; Maya art; Carving | Creating sketchbooks; Observational drawing |
| | | | | | | |

| Design and technology | | Tools and equipment; Recipes; Packaging; Working models | Structures | Food of Mexico; Evaluating and making instruments | | |
|-----------------------|---|--|---|--|---------------------------|---|
| History | First and Second World Wars; Causes; Warring nations; Weaponry, warfare and technology; Key events and battles; Impact on citizens and everyday life; Significant leaders; End of war; Local history study; Remembrance; Post-war Britain | | Emigration and exploration in the early 1900s | Ancient African kingdoms; Development of the transatlantic slave trade; Britain's role in the slave trade; Human impact; Everyday life on plantations; Rebellion and marronage; Causes and consequences of the abolition of the slave trade and slavery; Colonisation of Africa; Black people in 20th century Britain; Race Relations Act; Equality Act; Significant black Britons; Multiculturalism | Ancient Maya civilisation | Significant individuals – Charles Darwin, Mary Anning |

| | | | | | |
|---|----------------------------------|--|--|---|--|
| Music | | Pulse; Raps | Soundscapes | | Mexican music; Musical notation |
| Personal, social and health education | | Harmful substances; Caring about others | Care of the environment | Prejudice and discrimination; Diversity and multiculturalism | Taking responsibility |
| Science | Properties of light | Circulatory system; Measuring heart rate; Lifestyle effects; Working scientifically | Living things and their habitats | | Light and shadows |
| Physical education | | Cardiovascular exercise | Outdoor adventure; Orienteering | | Dance |
| Linked investigations (LTI) | Can you send a coded message? | How does blood flow? What's in blood? What can your heart rate tell you? | How do animals stay warm? Can we slow cooling down? | | How can we make red? What colour is a shadow? |
| | | | | | How have eyes evolved? How many worms are underground? Where do wild plants grow best? Why do birds have different beaks? Why is holly prickly? |