

Parts of Australian Animals

Cut and paste the information to match the parts of a koala.

body part	
description	



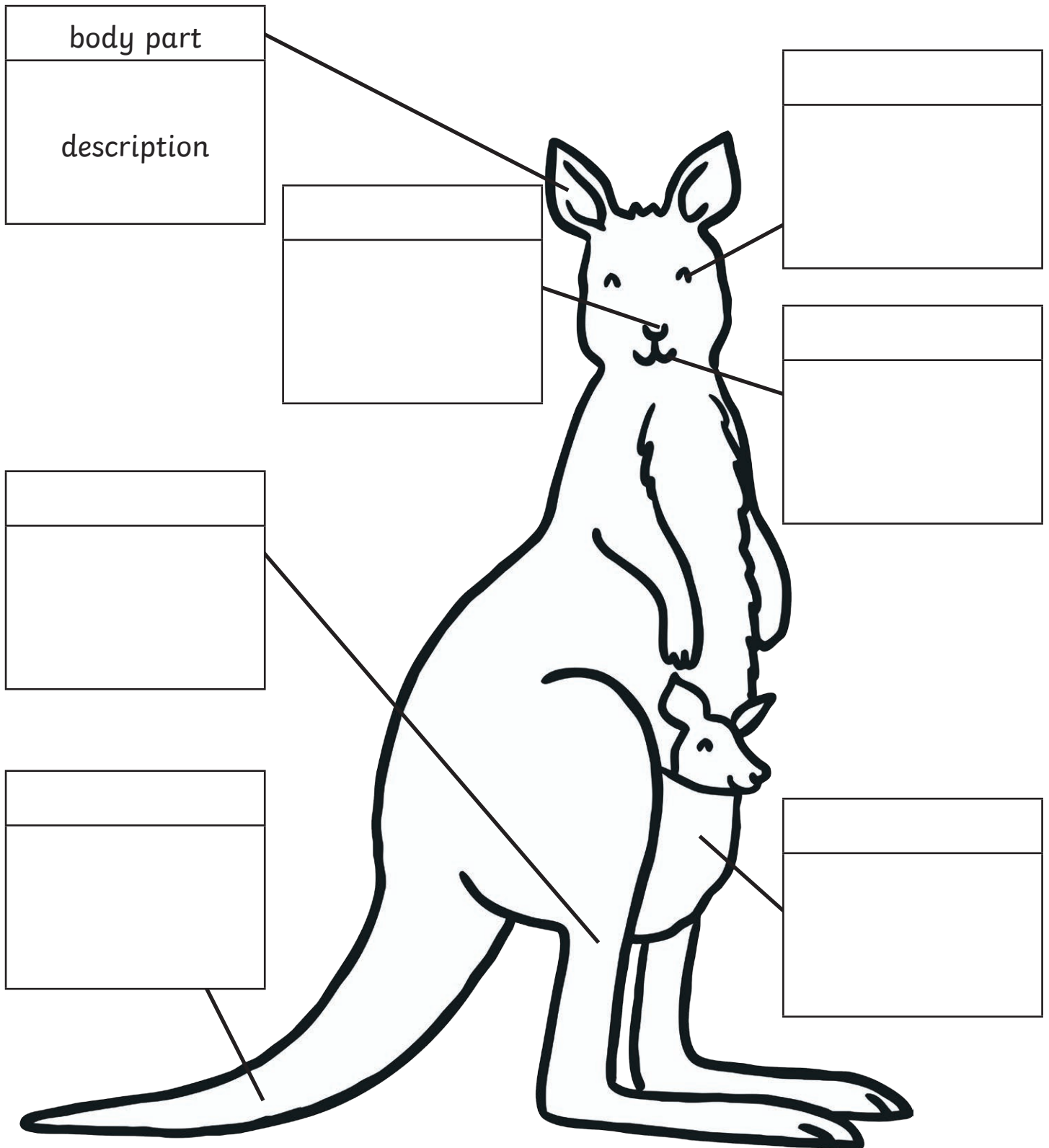
visit [twinkl.com](https://www.twinkl.com)



<p>The koala uses these to hear sounds.</p> <p><small>twinkl.co.uk</small></p>	<p>These help the koala move in trees and on the ground.</p>	<p>The koala uses this to smell and breathe through.</p>	<p>These allow the koala to see.</p>	<p>The koala uses this to eat food. Its teeth and tongue help it feed on leaves.</p>
limbs	eyes	ears	nose	mouth

Parts of Australian Animals

Cut and paste the information to match the parts of a kangaroo.

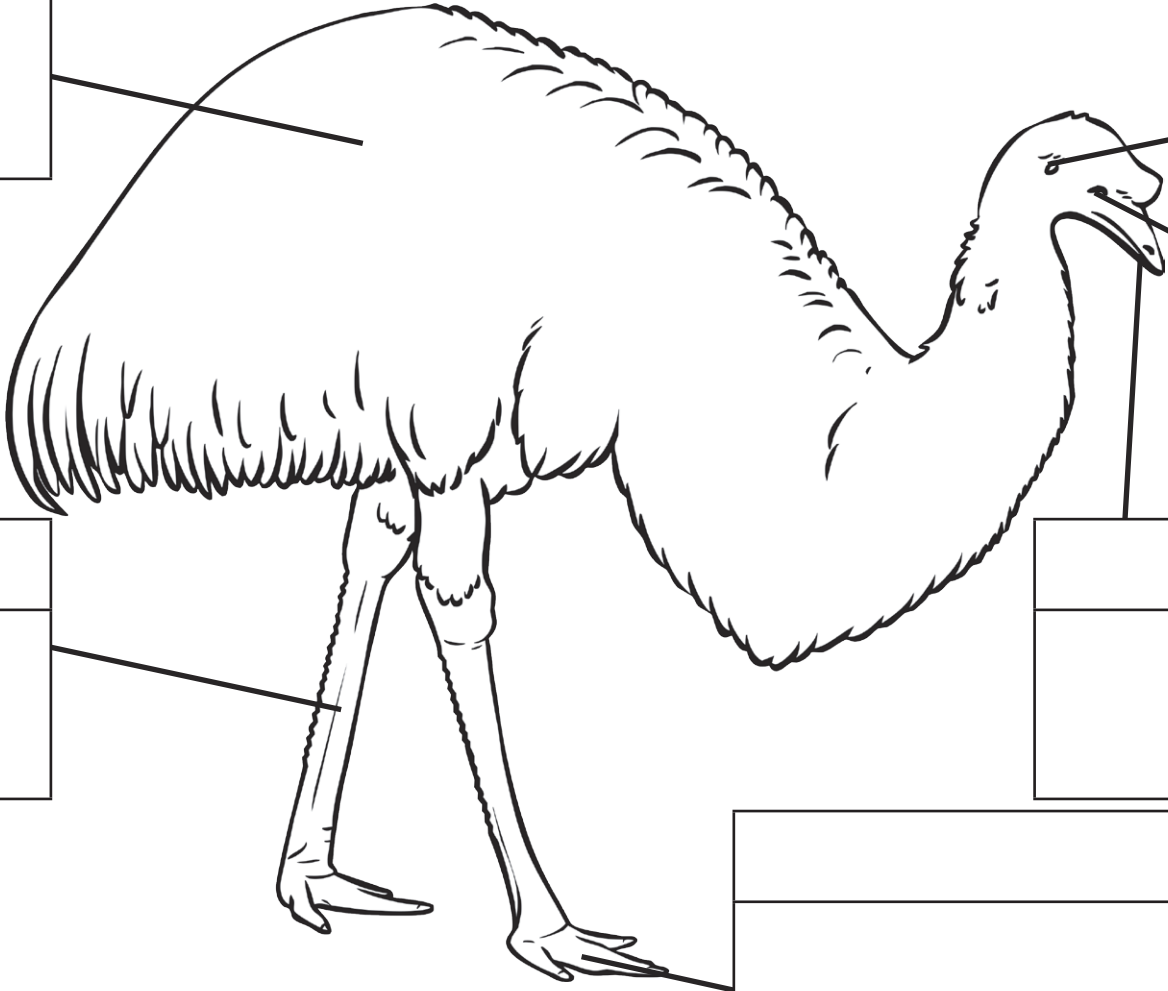


<p>The kangaroo uses these to hear sounds.</p> <p><small>twinkl.co.uk</small></p>	<p>The kangaroo uses this to eat food. Its teeth and tongue help it to chew food.</p>	<p>The kangaroo uses this to smell and breathe through.</p>	<p>This helps the kangaroo to balance. It is used like an extra leg.</p>
nose	ears	legs	tail
<p>These allow the kangaroo to see.</p>	<p>This helps the mother kangaroo to feed and protect newly born joeys.</p>	<p>These help the kangaroo move. They are strong and help them jump.</p>	
mouth	eyes	pouch	

<p>The kangaroo uses these to hear sounds.</p> <p><small>twinkl.co.uk</small></p>	<p>The kangaroo uses this to eat food. Its teeth and tongue help it to chew food.</p>	<p>The kangaroo uses this to smell and breathe through.</p>	<p>This helps the kangaroo to balance. It is used like an extra leg.</p>
nose	ears	legs	tail
<p>These allow the kangaroo to see.</p>	<p>This helps the mother kangaroo to feed and protect newly born joeys.</p>	<p>These help the kangaroo move. They are strong and help them jump.</p>	
mouth	eyes	pouch	

Parts of Australian Animals

body part
description

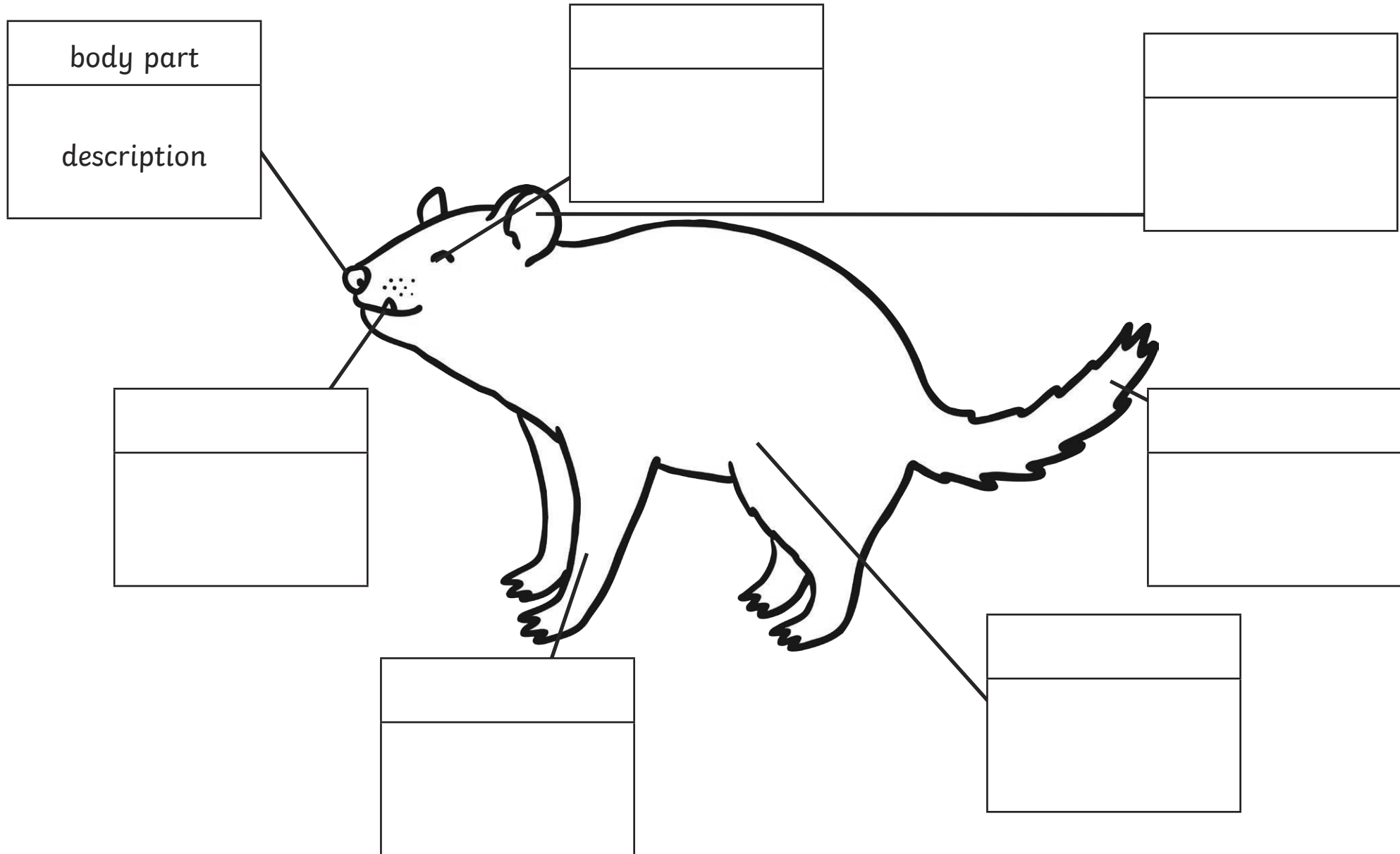


The emu uses these to hear sounds.	These are used for grip, scratching the ground and fighting.	The emu uses these to see with.
claws	legs	ears
These help the emu to balance when they run. They cannot fly because they are too small.	The emu uses this to gather food like insects, seeds, grass and leaves.	These are long and strong for standing and running.
eyes	wings	beak

The emu uses these to hear sounds.	These are used for grip, scratching the ground and fighting.	The emu uses these to see with.
claws	legs	ears
These help the emu to balance when they run. They cannot fly because they are too small.	The emu uses this to gather food like insects, seeds, grass and leaves.	These are long and strong for standing and running.
eyes	wings	beak

The emu uses these to hear sounds.	These are used for grip, scratching the ground and fighting.	The emu uses these to see with.
claws	legs	ears
These help the emu to balance when they run. They cannot fly because they are too small.	The emu uses this to gather food like insects, seeds, grass and leaves.	These are long and strong for standing and running.
eyes	wings	beak

Parts of Australian Animals

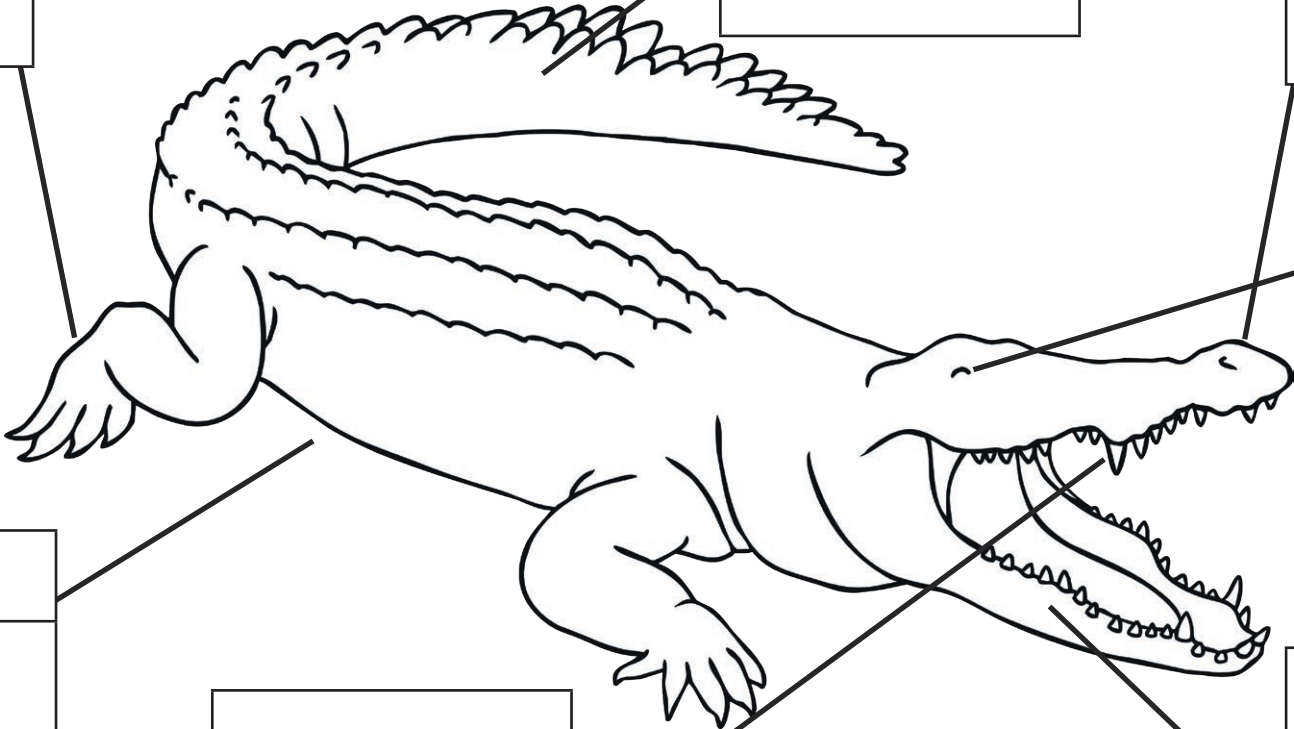


<p>The Tasmanian devil uses these to hear sounds.</p> <p><small>twinkl.co.uk</small></p>	<p>The Tasmanian devil uses this to smell and breathe through.</p>	<p>The Tasmanian devil uses this to eat food. It has a powerful jaws and eats meat.</p>	<p>This helps the Tasmanian devil balance when it moves quickly and stores fat.</p>
nose	ears	legs	tail
<p>The Tasmanian devil uses these to move.</p>	<p>These allow the Tasmanian devil to see.</p>	<p>This helps the Tasmanian devil mother to feed and protect newly born devils.</p>	
mouth	eyes	pouch	

<p>The Tasmanian devil uses these to hear sounds.</p> <p><small>twinkl.co.uk</small></p>	<p>The Tasmanian devil uses this to smell and breathe through.</p>	<p>The Tasmanian devil uses this to eat food. It has a powerful jaws and eats meat.</p>	<p>This helps the Tasmanian devil balance when it moves quickly and stores fat.</p>
nose	ears	legs	tail
<p>The Tasmanian devil uses these to move.</p>	<p>These allow the Tasmanian devil to see.</p>	<p>This helps the Tasmanian devil mother to feed and protect newly born devils.</p>	
mouth	eyes	pouch	

Parts of Australian Animals

body part
description



<p>The saltwater crocodile uses these to see its prey.</p> <p><small>twinkl.co.uk</small></p>	<p>Saltwater crocodiles have 66 of these in their jaws. They are very sharp.</p>	<p>The saltwater crocodile uses these to hold firmly onto their prey.</p>	<p>These are very short and to the side of the body.</p>
legs	snout	tail	body
<p>The saltwater crocodile is the largest reptile in the world.</p>	<p>The saltwater crocodile opens the nostrils at the end of this to breathe when it is in water.</p>	<p>The saltwater crocodile uses this to propel itself through the water quickly.</p>	
teeth	eyes	jaws	

<p>The saltwater crocodile uses these to see its prey.</p> <p><small>twinkl.co.uk</small></p>	<p>Saltwater crocodiles have 66 of these in their jaws. They are very sharp.</p>	<p>The saltwater crocodile uses these to hold firmly onto their prey.</p>	<p>These are very short and to the side of the body.</p>
legs	snout	tail	body
<p>The saltwater crocodile is the largest reptile in the world.</p>	<p>The saltwater crocodile opens the nostrils at the end of this to breathe when it is in water.</p>	<p>The saltwater crocodile uses this to propel itself through the water quickly.</p>	
teeth	eyes	jaws	