

Koru Designs

You will need:

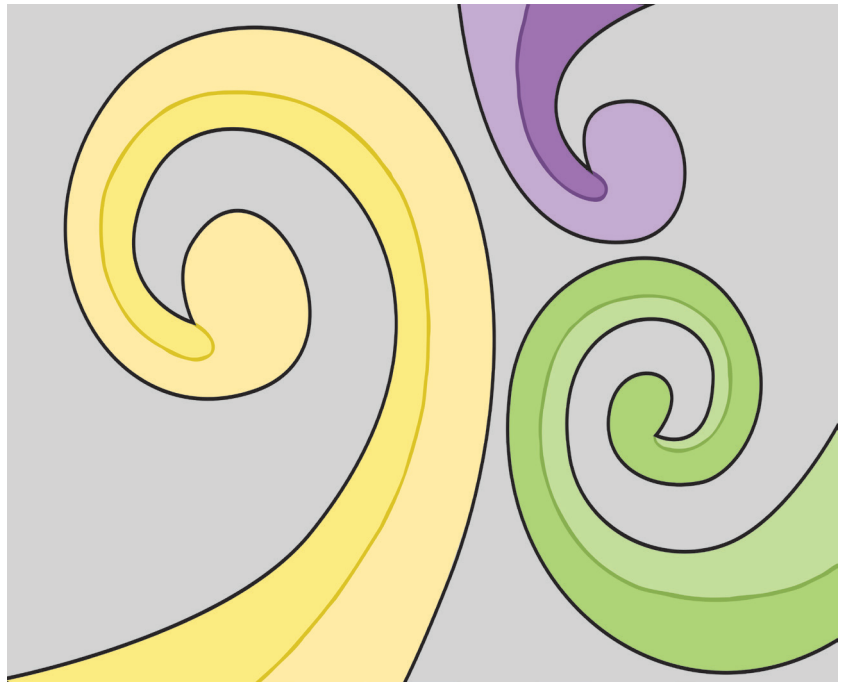
A4 card

Contact paper

Sticky tape

Natural resources (leaves, small sticks, feathers, shells, pebbles, wool, seeds, flowers)

Glue



Instructions

1. Use koru shapes as stencils on the cardboard and then cut them out.
2. Measure a piece of contact paper that fits the size of your card. Use sticky tape to attach the shiny side of the contact paper to the table.
3. Peel off the paper backing and lay your cut-out cardboard with koru shapes cut out of it onto the contact paper.



4. Decorate the exposed sticky shapes with natural materials. (You can cover this with another sheet of cardboard or contact paper and display on the wall or in the windows.)

Vocabulary

koru — loop (often used in shape of curled fern frond)

huruhuru — feather

kōhatu — pebble

ngā rau — leaves

manga — twig

ngā angaanga — shells

ngā putiputi — flowers

ngā puapua — petals

ngā purapura — seeds

harakeke — flax

onepū — sand

